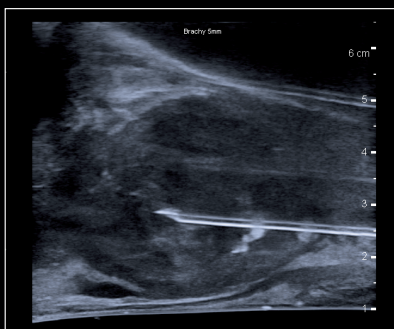


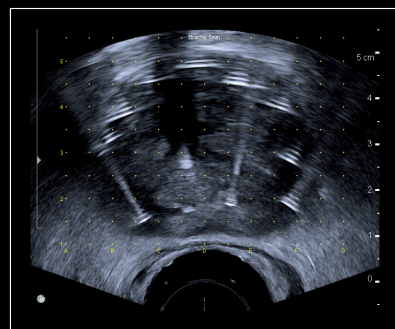


# Excellent Visualization for Guiding Brachytherapy Procedures

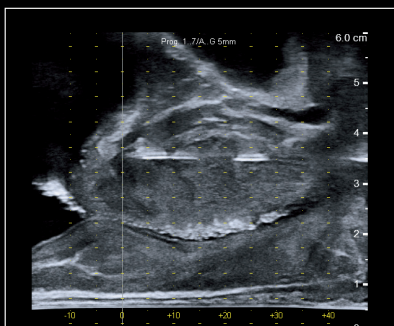
- Outstanding imaging of the prostate and surrounding structures to guide LDR and HDR procedures.
- Simultaneous imaging of transverse and sagittal planes on a single monitor provides better orientation for needle guidance and source placement.
- The sterilizable transducer has an extended sagittal field of view to enable precise visualization of the needle path.
- Digital calibration of customizable drop-down grids with easy on-screen adjustments.
- Unique digital integration with planning software provides outstanding images of source positioning and a seamless workflow.
- Instant 3D imaging to help confirmation of source placement.



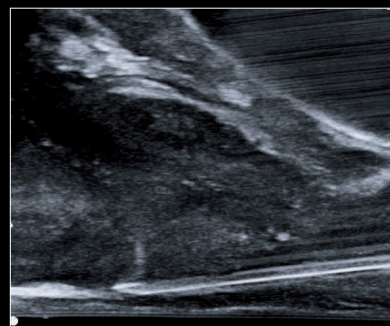
Sagittal image of prostate during brachytherapy.



Transverse image of prostate during brachytherapy.



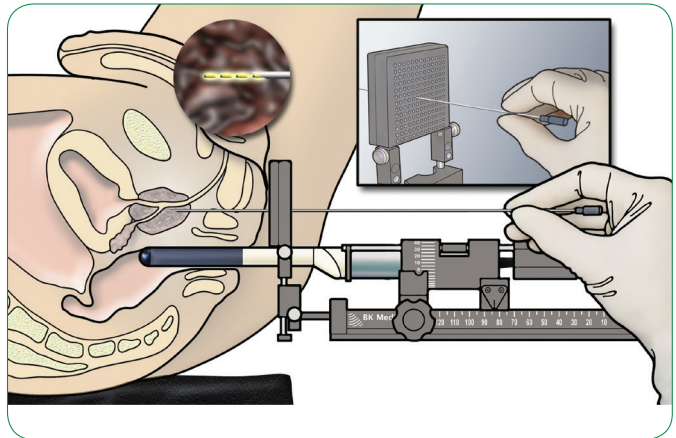
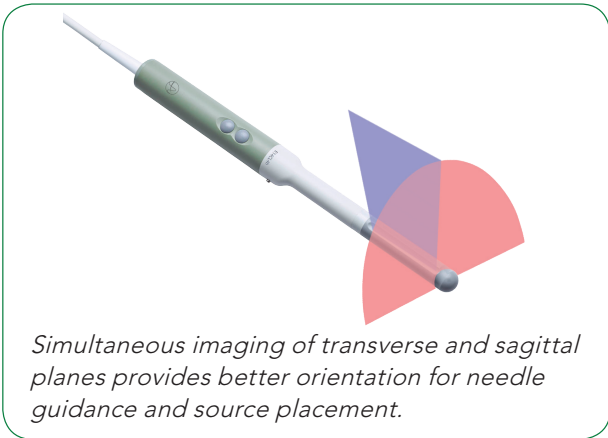
Sagittal image of prostate during brachytherapy. Seeds visible.



Needle Visualization for Hydrogel Spacer Injection.

# Expert Guidance for Your Brachytherapy Procedures

bkSpecto and bk3000/5000 bring a new level of real-time visual guidance to help you follow the needle path and perform brachytherapy procedures with confidence.



With 40 years of experience in ultrasound guidance for urology and radiation oncology procedures, BK Medical is your expert ultrasound partner for imaging, biopsies, and guiding therapy procedures.

- Prostate LDR and HDR procedures
- Fiducial markers
- Prostate biopsies
  - Transrectal and Transperineal
- MRI/Ultrasound fusion biopsies
- Hydrogel placement



BK Medical  
8 Centennial Drive  
Peabody, MA 01960  
USA  
T +1 978 326 1300  
bkmedical.com

USA  
Sales & Service  
BK Medical  
8 Centennial Drive  
Peabody, MA 01960  
USA  
T +1 978 326 1300  
F +1 978 326 1399  
bkmedical.com

Europe and Rest of World  
Sales, Service & Design Center  
BK Medical  
Mileparken 34, 2730  
Herlev, Denmark  
T +45 4452 8100  
F +45 4452 8199  
bkmedical.com

